


English Courses for Adults



LOVE 
DUBLIN
LOVE ISI

[studyinireland.ie](https://www.studyinireland.ie)



Meet the ISI Dublin team.
We have won the prestigious
Study Travel English
Language School Europe
Award four times - 2014,
2016, 2018 and 2020/21 As a
team we are dedicated to
being the best in everything
we do.

ST | star awards

Winner 2014

ST | star awards

Winner 2016

ST | star awards

Winner 2018

ST | star awards

Winner 2020/21

CONTENTS

Why Dublin?	4
Why ISI Dublin?	7
Meetinghouse Lane School	10
Parnell Square School	12
Belvedere School	14
Studying at ISI Dublin	16
General English Programmes	18
Cambridge Examinations	22
IELTS Examinations	24
Business English	26
Academic Year - Work & Study	28
Levels & Qualifications	31
Social Programme	33
Facilities	41
Host Family	47
Student Residence	49

All English language programmes are recognised by ACELS, a service of Quality and Qualifications Ireland (QQI), for English language teaching (ELT). ISI Dublin is a member of MEI & ALTO. We are a certified examination centre for the Trinity College London examinations and Language Cert and a preparation centre for Cambridge Examinations. Our courses are eligible for various EU funding initiatives, including Bildungsurlaub and Erasmus +. We are founding members of AGPI.





WHY DUBLIN ?

With a population of just over one million, Dublin, the capital of the Republic of Ireland, is the best place in the world to study! Once the home of writers James Joyce, Bram Stoker, Samuel Beckett and Oscar Wilde, today its celebrated inhabitants and natives include rock band U2, singer Sinéad O'Connor, writers Roddy Doyle and Anne Enright, and actors Saoirse Ronan and Jonathan Rhys Meyers.



Love Learning

- International European Capital City
- Native English speaking
- Population 1.2 million
- Small city centre, easy to explore
- Plenty of part-time jobs for students
- Safe and friendly environment
- Cheap and short flights to European cities
- 50% per cent of its inhabitants aged under 25
- European headquarters of companies such as Google, Facebook, LinkedIn and Twitter
- Large number of free museums, art galleries and historical sites

ISI





WHY ISI DUBLIN?

Academic excellence is at the heart of what we do. We are recognised by ACELS, a service of Quality and Qualifications Ireland (QQI) for English language teaching. We are also an official examination centre for the Trinity College London ISE examination and Language Cert, as well as being a preparation centre for the Cambridge Examinations and IELTS. We pride ourselves on our stylish and comfortable interiors and the use of technology in the classroom.

- Established in 2001
- Government accredited through ACELS, a service of QQI
- Three times winner of the Study Travel, English Language School Europe Award (2014, 2016 and 2018)
- Learner protection guaranteed
- Highly qualified and experienced staff and teachers
- Located in the city centre
- Two adult centres and one junior summer camp
- Beautiful and stylish interiors
- Latest technology in the classroom
- Members of the quality associations MEI, ALTO and AGPI
- Full range of quality English language programmes for adults and juniors
- High examination success rate

DUBLIN



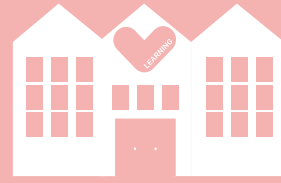
SMITHFIELD

JAMESON TOWER



CHURCH STREET

KING STREET NORTH



ISI MHL



LUAS STOP



CARPEL STREET

MARY STREET

PARNELL STREET

FOUR COURTS

CHANCERY STREET

MARY'S ABBEY

INVIS QUAY

ORMOND QUAY

WOOD QUAY



GUINNESS FACTORY



TEMPLE BAR

DAME STREET



ISI PSQ



BELVEDERE COLLEGE
ISI SUMMER CAMP

PARNELL STREET



CONNOLLY
STATION

ILAC
SHOPPING
CENTRE

THE SPIRE

TALBOT STREET

HENRY STREET

JERVIS
SHOPPING
CENTRE



LUAS
STOP

O'CONNELL STREET

EDEN QUAY

JERVIS STREET

ABBAY STREET

BACHELOR'S WALK

WELLINGTON QUAY

D'OLLER STREET



TARA STREET
STATION

CENTRAL BANK



EUSTACE STREET

TEMPLE BAR



DAME STREET

GRAFTON STREET
↓

PEARSE STREET

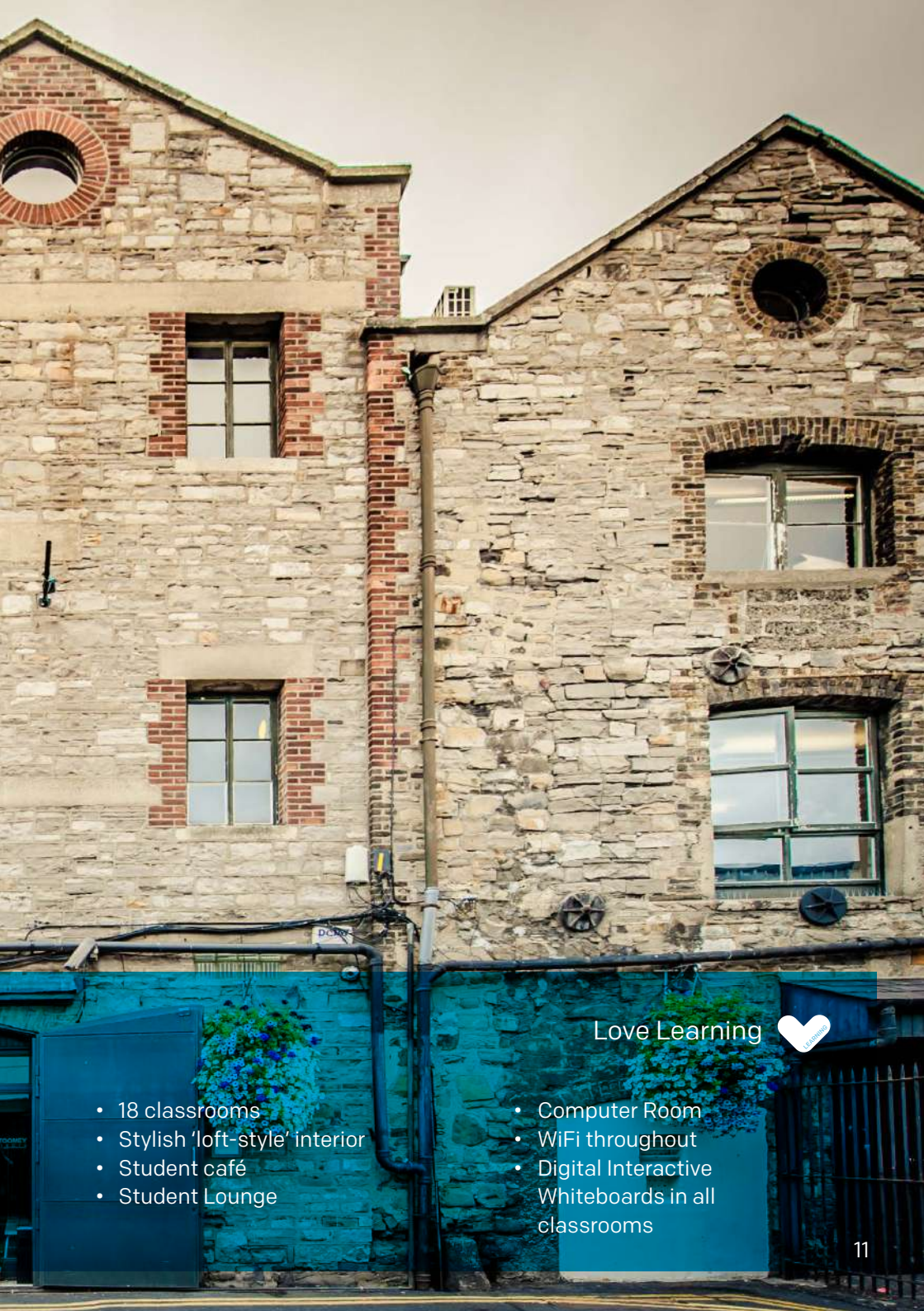


TRINITY COLLEGE



MEETINGHOUSE LANE SCHOOL

Our Meetinghouse Lane school is located in a beautiful 18th century stone warehouse, converted into a school in 2001. Its interior combines original stone walls and wooden floors with a sleek and modern design, decorated with inspirational art pieces and murals by local artists.



- 18 classrooms
- Stylish 'loft-style' interior
- Student café
- Student Lounge

Love Learning



- Computer Room
- WiFi throughout
- Digital Interactive Whiteboards in all classrooms



PARNELL SQUARE SCHOOL

Our Parnell Square centre is housed in a beautiful redbrick Georgian building close to O'Connell Street and just 10 minutes' walk from Meetinghouse Lane. The building combines large & ornate period rooms with modern furniture & artwork to create a wonderful learning



Love Learning

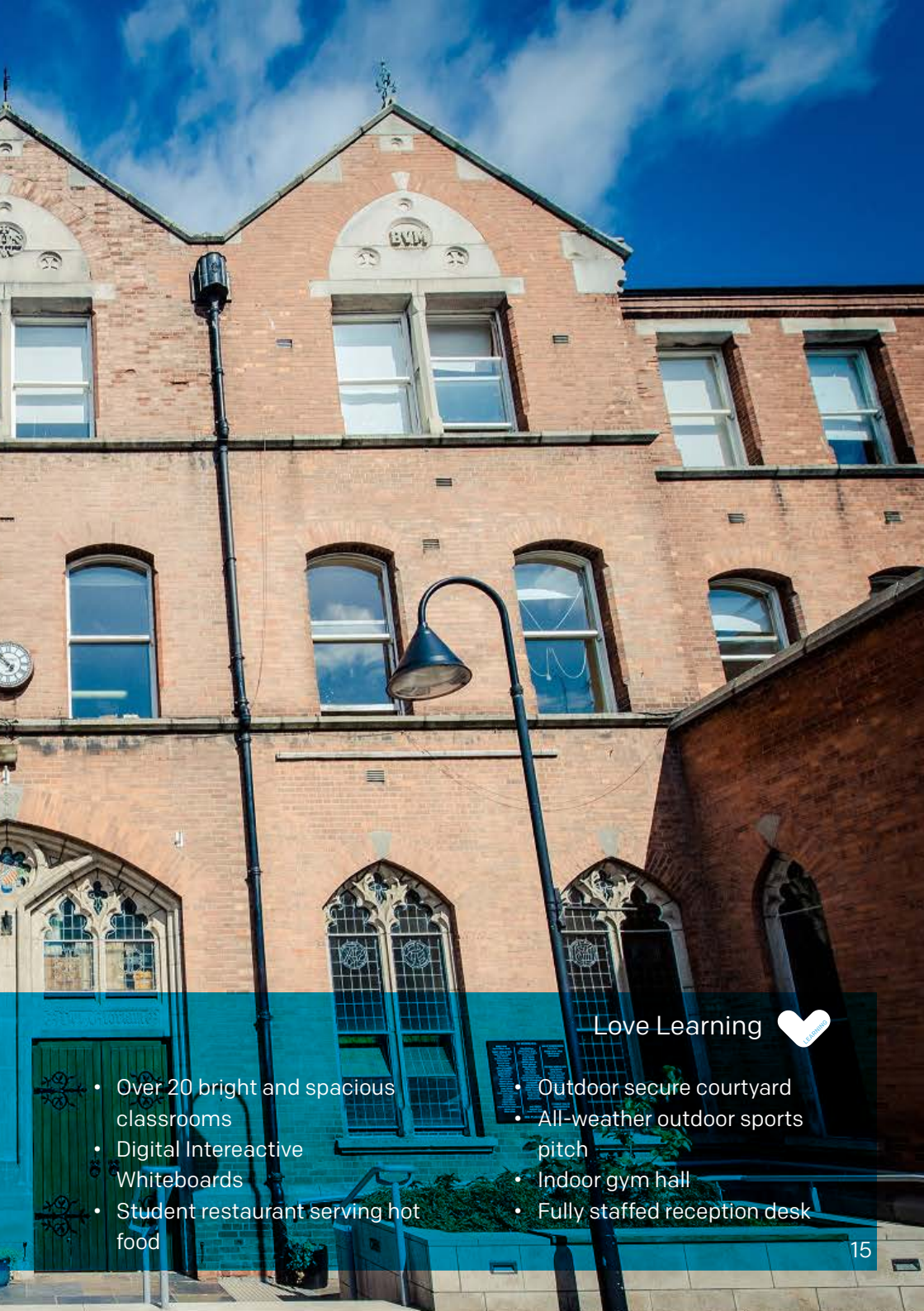


- 8 classrooms
- Beautiful Georgian style interior
- More intimate atmosphere
- Large student café with a computer suite
- WiFi throughout
- Digital Interactive Whiteboards in all classrooms



BELVEDERE SCHOOL

Our summer camp is located at Belvedere College, a historic private school in the heart of Dublin's city centre. Just a few minutes' walk from O'Connell Street and our Parnell Square school, the building is a renowned and prestigious private high school during the school year – James Joyce was a student there in 1894! We also run a small overflow adult centre in Belvedere, separate from the summer camp classes.



Love Learning 

- Over 20 bright and spacious classrooms
- Digital Interactive Whiteboards
- Student restaurant serving hot food
- Outdoor secure courtyard
- All-weather outdoor sports pitch
- Indoor gym hall
- Fully staffed reception desk



STUDYING AT ISI DUBLIN

Choosing to study English could be one of the most important decisions you will ever make! Fluency and competence in the language is now a necessity for anyone who wants to travel abroad and a prerequisite for most careers. An English course at ISI is a unique experience.



A Work in pairs. Look at the pictures in File 10 on p. 159 and discuss these questions:

- Which of these animals do you like? Why?
- Are you scared of any of these animals? Why?

 1 squirrel	 2 lizard	 3 bear	 4 eagle	 5 dolphin
 6 cockroach	 7 deer	 8 whale	 9 wolf	 10 crow
 11 crocodile	 12 parrot	 13 snake	 14 scorpion	 15 rat

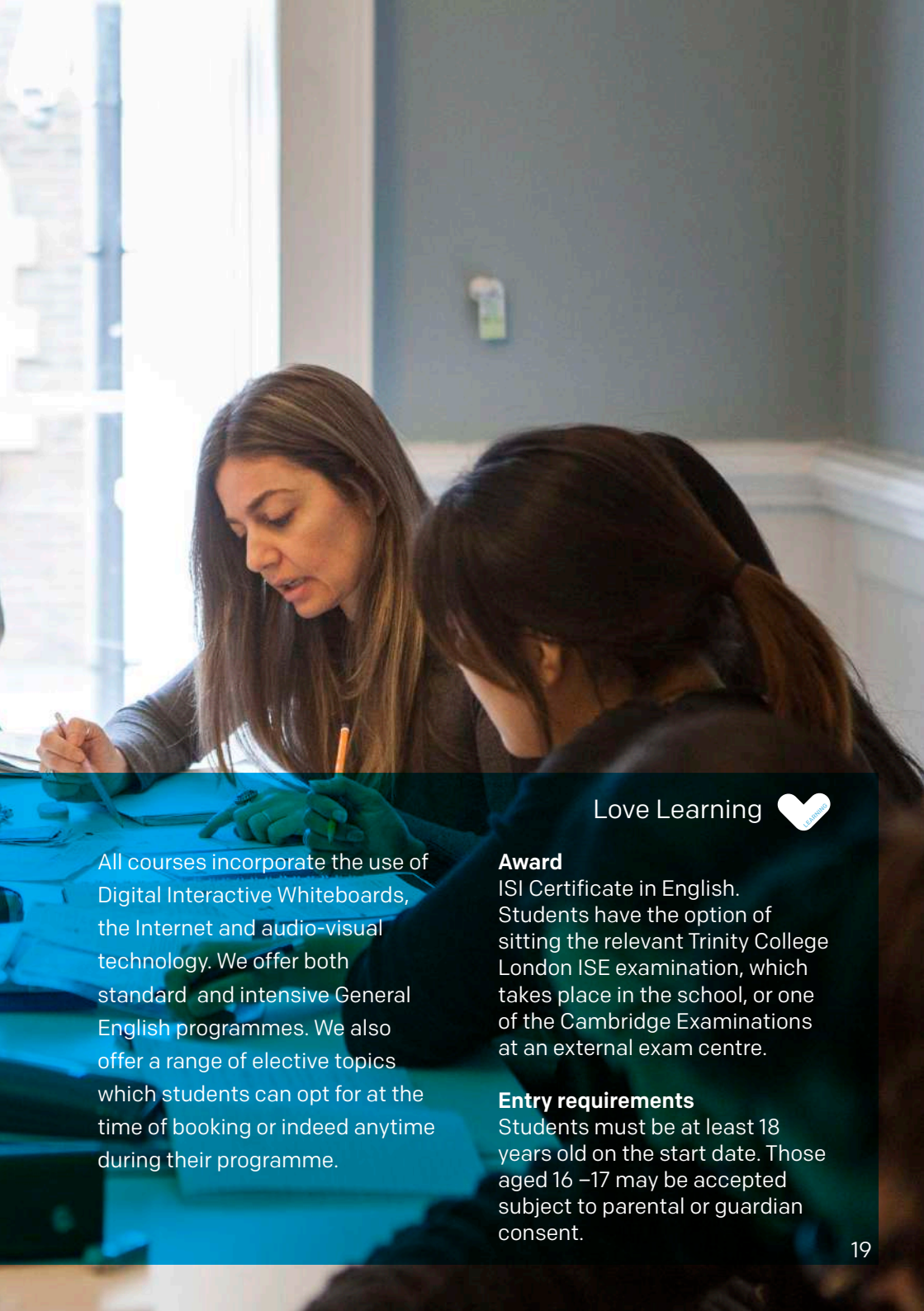
We offer a range of English Language courses to suit all requirements, combining key language skills with a full range of specialist classes and internationally renowned examinations. Our teachers are all university graduates with recognised teaching qualifications, experience and most importantly, a love of their profession. Our classes incorporate the use of Digital Interactive Whiteboards, the latest linguistic software and the Internet.


A photograph of three students in a classroom. A woman with long blonde hair, wearing a plaid shirt, is leaning over a desk, looking at a book. A man with dark hair and a beard, wearing a grey jacket, is sitting behind her, smiling and holding a pen. Another student is partially visible on the right side of the frame. The background shows a window with a view of a city building.

GENERAL ENGLISH PROGRAMMES

These programmes are suitable for everyone and provide a good foundation in the main linguistic skills of reading, writing, listening and speaking. With a strong focus on communication skills, these courses also provide a solid foundation in the key skills required in the Trinity College London ISE Examinations as well as Cambridge examinations.

The method used is task-based, which means that by the end of each level students are expected to be able to complete a certain amount of tasks through English. There is a central course book and workbook and teachers supplement these using authentic materials such as newspapers, magazines, menus, manuals, brochures and a range of other books.



Love Learning 

All courses incorporate the use of Digital Interactive Whiteboards, the Internet and audio-visual technology. We offer both standard and intensive General English programmes. We also offer a range of elective topics which students can opt for at the time of booking or indeed anytime during their programme.

Award

ISI Certificate in English. Students have the option of sitting the relevant Trinity College London ISE examination, which takes place in the school, or one of the Cambridge Examinations at an external exam centre.

Entry requirements

Students must be at least 18 years old on the start date. Those aged 16 –17 may be accepted subject to parental or guardian consent.



GENERAL ENGLISH

General English 15 (GE15)

Levels

A0 – C2

Schedule

09:00 – 12.15 (morning class)
13.30 – 16.40 (afternoon class)
12:25 – 13:25 + 16:45 – 18:45

Course start dates

Any Monday of the year, excluding Christmas vacation

Hours per week

15

Duration

1 – 24 weeks

Key points

- Suitable for any student who wishes to improve their English in a less intensive way
- General 'all-round' approach
- Revision of major grammar and vocabulary at each level
- In-house examinations
- More time for out-of-class activities

General English 20 (GE20)

Levels

A1 – C2

Schedule

GE15 schedule +
8.00 – 9.00 or 12.25 – 13.25

Course start dates

Any Monday of the year, excluding Christmas vacation

Hours per week

20

Duration

1 – 24 weeks

Key points

- More intensive programme
- Includes GE15 and one special topic with a different teacher:
 - Examination skills
 - Grammar in context
 - Reading and Listening
 - Conversation Skills
 - Advanced writing skills



Love Learning



General English 25 (GE25)

Levels

A1 – C2

Schedule

GE15 schedule +
8.00 – 9.00 and 12.25 – 13.25

Course start dates

Any Monday of the year, excluding
Christmas vacation

Hours per week

25

Duration

1 – 24 weeks

Key points

- Very intensive programme
- Includes GE15 and two special topics with different teachers:
 - Examination skills
 - Grammar in context
 - Reading and Listening
 - Conversation Skills
 - Advanced writing skills
- Erasmus + and Bildungsurlaub approved

General English 30 (GE30)

Levels

A0 – C2

Schedule

09-00 – 16.40
Lunch 12.15 - 13.25

Course start dates

Any Monday of the year, excluding
Christmas vacation

Hours per week

30

Duration

1 – 24 weeks

Key points

- Super intensive programme
- Includes two GE15 programmes, one in the morning and one in the afternoon
- Two different teachers
- No elective topics
- Suitable for short stays
- Erasmus + and Bildungsurlaub approved



CAMBRIDGE EXAMINATIONS

Cambridge examinations are internationally recognized by employers and universities. At ISI Dublin we offer two kinds of courses for students wishing to complete the Cambridge FCE or CAE examinations, one part-time and one intensive.

Award

ISI Certificate in English and the Cambridge First Certificate in English (FCE) or Certificate in Advance English (CAE).

Entry requirements

Students must complete the ISI online test scoring B2 for FCE or C1 for CAE.



CAMBRIDGE EXAMINATIONS

General English + Cambridge
Examinations Skills 20 (CES20/25)

Levels

FCE and CAE (B2 – C1)

Schedule

GE15 schedule +
8.00 – 9.00 and/or 12.25 – 13.25

Course start dates

Any Monday of the year, excluding
Christmas vacation

Hours per week

20/25

Duration

12 – 24 weeks

Key points

- Intensive programme
- General English 3 – 4 hours per day
- Examination Skills one hour per day
- Combined FCE and CAE skills
- Suitable for long-term study
12-25 weeks

First Certificate English (FCE 20/25)
Certificate Advanced English (CAE 20/25)

Levels

FCE: B2 + / CAE: C1 +

Schedule

8.00 – 9.00 (25 hour option)
9.00 – 13.25

Course start dates

Please contact our office in advance
for the exact dates

Hours per week

20/25

Duration

12 weeks +

Key points

- Very intensive programme
- Dedicated Cambridge
preparation classes every day
- Two different teachers
- Fixed dates each year leading
up to the official Cambridge
Examination dates



IELTS EXAMINATIONS

An IELTS level is an entry requirement for universities worldwide. At ISI Dublin we offer two kinds of courses for students wishing to do the IELTS examination, one part-time aimed at IELTS level 5 or 6 and one intensive, aimed specifically at IELTS level 6/6.5.

Award

ISI Certificate in English and the IELTS certificate.

Entry requirements

Students must complete the ISI online test scoring a minimum of B2.



IELTS EXAMINATIONS

General English + IELTS Examination
Skills 20 (IES20/25)

Levels

B2 – C1

Schedule

GE15 schedule +
8.00 – 9.00 and/or 12.25 – 13.25

Course start dates

Any Monday of the year, excluding
Christmas vacation

Hours per week

20/25

Duration

1 – 24 weeks

Key points

- Intensive programme
- General English 3 – 4 hours per day
- IELTS skills one hour per day
- Combined FCE and CAE skills
- Suitable for long-term study 12-25 weeks

IELTS Intensive (IELTS 20)

Levels

B2 + – C1 +

Schedule

8.00 – 9.00 (25 hour option)
9.00 – 13.25

Course start dates

Please contact our office in advance
for the exact dates

Hours per week

20/25

Duration

12 weeks

Key points

- Includes some General English modules
- Very intensive programme
- Dedicated IELTS preparation modules every day
- Two different teachers
- Fixed dates each year leading up to the official IELTS Examination dates

A photograph of a classroom with a teacher and several students. The teacher is standing and facing a group of students seated at desks. The room has exposed brick walls and large windows. A semi-transparent blue overlay covers the bottom half of the image, containing text.

BUSINESS ENGLISH

English is the international language of the business world.

Many of our students need to develop language skills for the workplace, and our Business English programmes are ideal for this purpose. We offer two kinds of courses, one combines General English with one hour per day of

Business English and the other is a full-time, intensive programme designed for short stays. Topics covered include:

- Company structures
- Business meetings
- Negotiations
- Marketing & Sales
- Intercultural awareness



BUSINESS ENGLISH

General English + Business
(GEB20/25)

Levels

B1 – C1

Elective Schedule

GE15 schedule +
8.00 – 9.00 and/or 12.25 – 13.25

Course start dates

Any Monday of the year, excluding
Christmas vacation

Hours per week

20/25

Duration

1 – 24 weeks

Key points

- Intensive programme
- General English 3 – 4 hours per day
- Business English one hour per day
- Suitable for long-term study 12-25 weeks
- Erasmus + and Bildungsurlaub approved

Intensive Business English
(IBE20/25)

Levels

B2 – C1

Schedule

8.00 – 9.00 (25 hour option)
9.00 – 13.25

Course start dates

Please contact our office in advance
for the exact dates

Hours per week

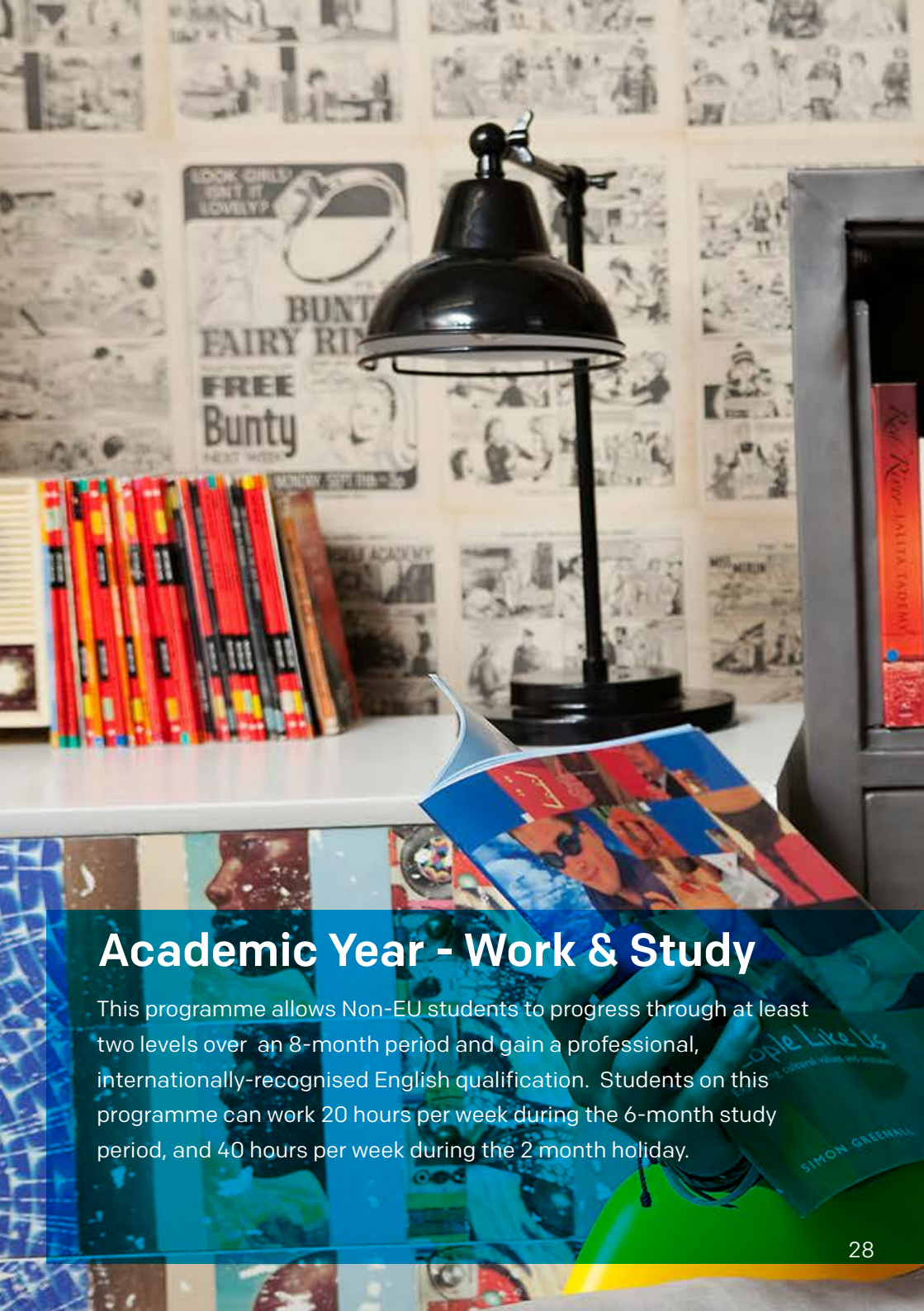
20/25

Duration

1 – 2 weeks

Key points

- Very intensive programme
- No General English, dedicated Business English classes every day
- Two different teachers
- Fixed dates each year
- Suitable for short-term study
- Erasmus + and Bildungsurlaub approved



Academic Year - Work & Study

This programme allows Non-EU students to progress through at least two levels over an 8-month period and gain a professional, internationally-recognised English qualification. Students on this programme can work 20 hours per week during the 6-month study period, and 40 hours per week during the 2 month holiday.



Hotel La República. 1968

Love Learning



Award

All students who successfully complete the programme receive the ISI Certificate in English.

Non-EU students must complete an official examination at the end of the programme such as Trinity ISE, FCE, CAE and IELTS.

Entry requirements

Students should be at least 18 years old on the course start date.



ACADEMIC YEAR - WORK & STUDY

Students on Academic Year programmes are integrated with the General English classes. This creates an international mix of students, each doing courses of different durations. With a full 25-week programme, Academic Year students can expect to progress through at least two levels during their course before completing their final exit examination. Our morning classes offer a greater international mix of students, while the discounted afternoon classes tend to have fewer nationalities.

Academic Year 15 (AY15)

Levels

A0 – C2

Schedule

09-00 – 12.15 (morning class)

13.30 – 16.40 (afternoon class)

Course start dates

Any Monday of the year, excluding Christmas vacation

Hours per week

15

Duration

8 months

(min. 25 weeks study + 1 week exam)

Key points

- Suitable for any student who wishes to improve their English in a less intensive way
- General 'all-round' approach
- Revision of major grammar and vocabulary at each level
- In-house examinations
- Students can work 20 hours per week



LEVELS & QUALIFICATIONS

ISI A0

Complete Beginners

ISI A1

Elementary

ISI A2

Pre-Intermediate

Cambridge KET

ISE Foundation

ISI B1

Intermediate

Cambridge PET

IELTS 4 – 5

ISE 1



Love Learning



ISI B2

Upper intermediate

Cambridge FCE

IELTS 5 – 6

ISE 2

ISI C1

Advanced

Cambridge CAE

IELTS 6.5 – 8

ISE 3

ISI C2

Very Advanced

Cambridge CPE

IELTS 9

ISE 4



SOCIAL PROGRAMME

We believe the social programme is an essential part of the ISI Dublin student experience. That's why we employ a team of friendly and enthusiastic social programme coordinators responsible for organising a wide range of exciting and inspirational activities for our students.



Love Learning



Examples of these activities include:

- History Club
- Jobs Club
- Conversation Corner
- Orientation and Guided Tours
- Museum and Art Gallery visits
- Sports
- Seasonal Parties
- Pub Evenings
- Cultural Nights
- Saturday Excursions

A group of people, including students, are walking on a cobblestone street in Dublin. In the background, there is a tall brick chimney with a glass-enclosed structure on top, and modern buildings with glass facades. The sky is overcast.

GUIDED TOURS & HIKES

Dublin is a small city, sometimes best explored on foot! Every Monday we offer walking tours to places of interest as part of our new student orientation. In addition, every Friday, we bring students on a hike to seaside villages outside the city, for example, Howth, Killiney, Dalkey and Bray. Our guided tours are a great way for new students to get to know Dublin and make new friends.



CONVERSATION CORNER

Coordinated by our staff, Conversation Corner takes place every Wednesday evening at a neighbourhood pub. Various language games and “speed-dating” techniques are used to inspire conversation. It is one of our most popular events, as it allows students to make new friends and practise their English in a relaxed and sociable atmosphere.



HISTORY CLUB

The History Club allows students to learn about Ireland's rich cultural past in a fun and interactive way, using online resources, documentaries, music and film. The club is attended each week by up to 25 students and aims to bring Irish culture and history to life. As it is a mixed level activity, it also offer students the opportunity to meet students from other classes.

A photograph of three young adults sitting at a table in a pub. They are all smiling and clinking their glasses of Guinness beer. The man on the left is wearing a red t-shirt, the woman in the middle is wearing a dark blue sweater, and the man on the right is wearing a dark blue t-shirt. The background shows a window with a view of a street and some blurred lights. A semi-transparent blue box is overlaid on the bottom left of the image, containing the text.

STUDENT PARTIES

Every four weeks we offer an international student party. These exciting events take place in local pubs or nightclubs and involve various themes (Easter, Hallowe'en, St. Patrick's Day), as well as a DJ and great drink promotions. Our students use this opportunity to relax and get to know each other!



JOBS CLUB

Many of our students want to find a part-time job during their studies. Our very popular Jobs Club is coordinated by one of our teachers every week and is free for all students. Topics covered include how to find a job, writing a CV & cover letter, as well as interview skills.



SATURDAY TOURS

Every Saturday we organise full day bus tours around Ireland with special discounted prices for our students. Destinations include Belfast (Titanic Museum), Cliffs of Moher, Glengalough and Kilkenny Castle. These tours are a great way for students to explore Ireland and meet other students.

FACILITIES

We believe your learning space should be a beautiful and inspirational one. ISI Dublin offers two year-round centres offering excellent facilities in beautifully decorated buildings.



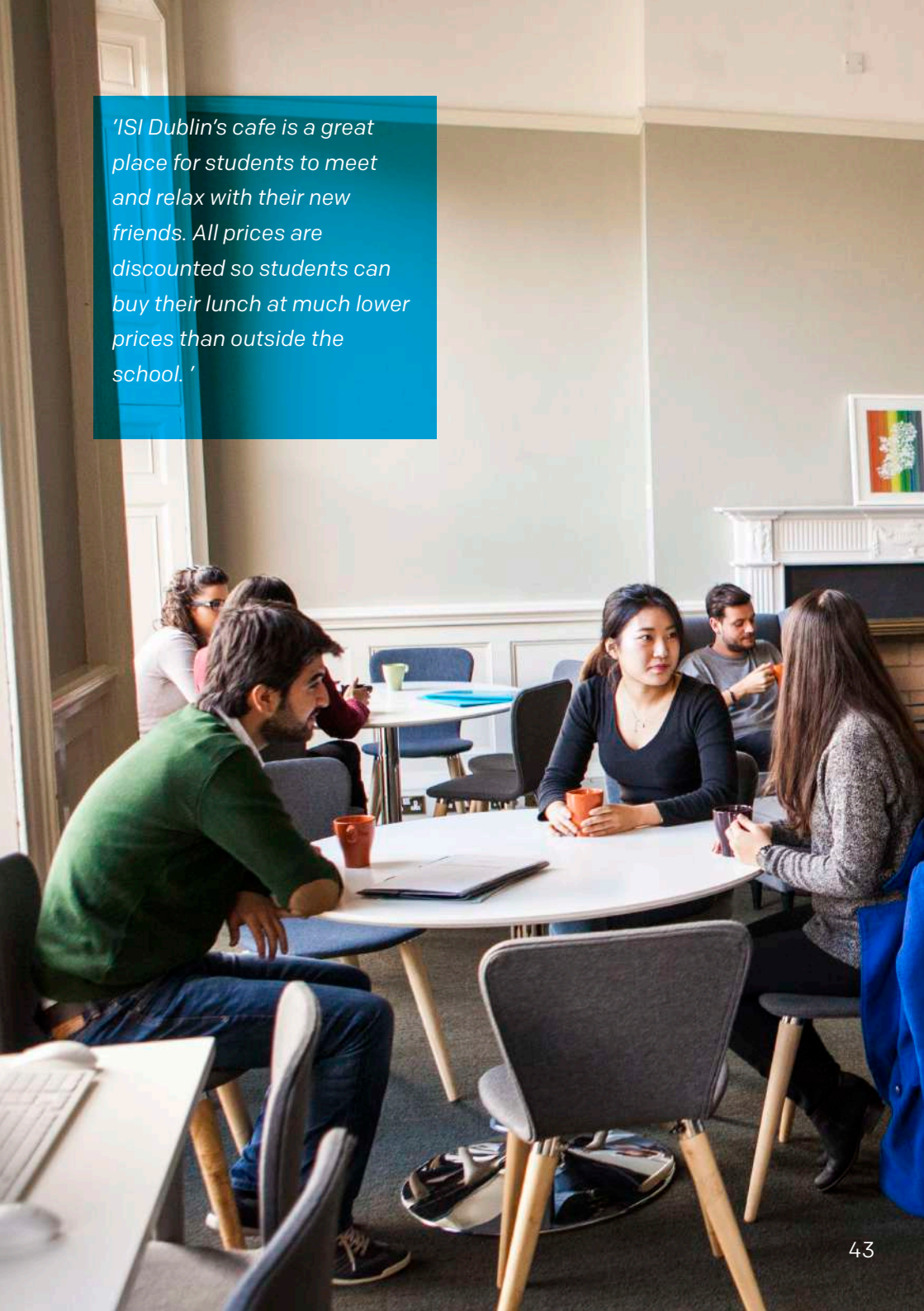
Love Learning



Facilities at both centres include:

- Bright and comfortable classrooms
- Stylish interiors
- Student café
- Student Lounge
- Computer Room
- WiFi throughout
- Digital Interactive Whiteboards in all classrooms

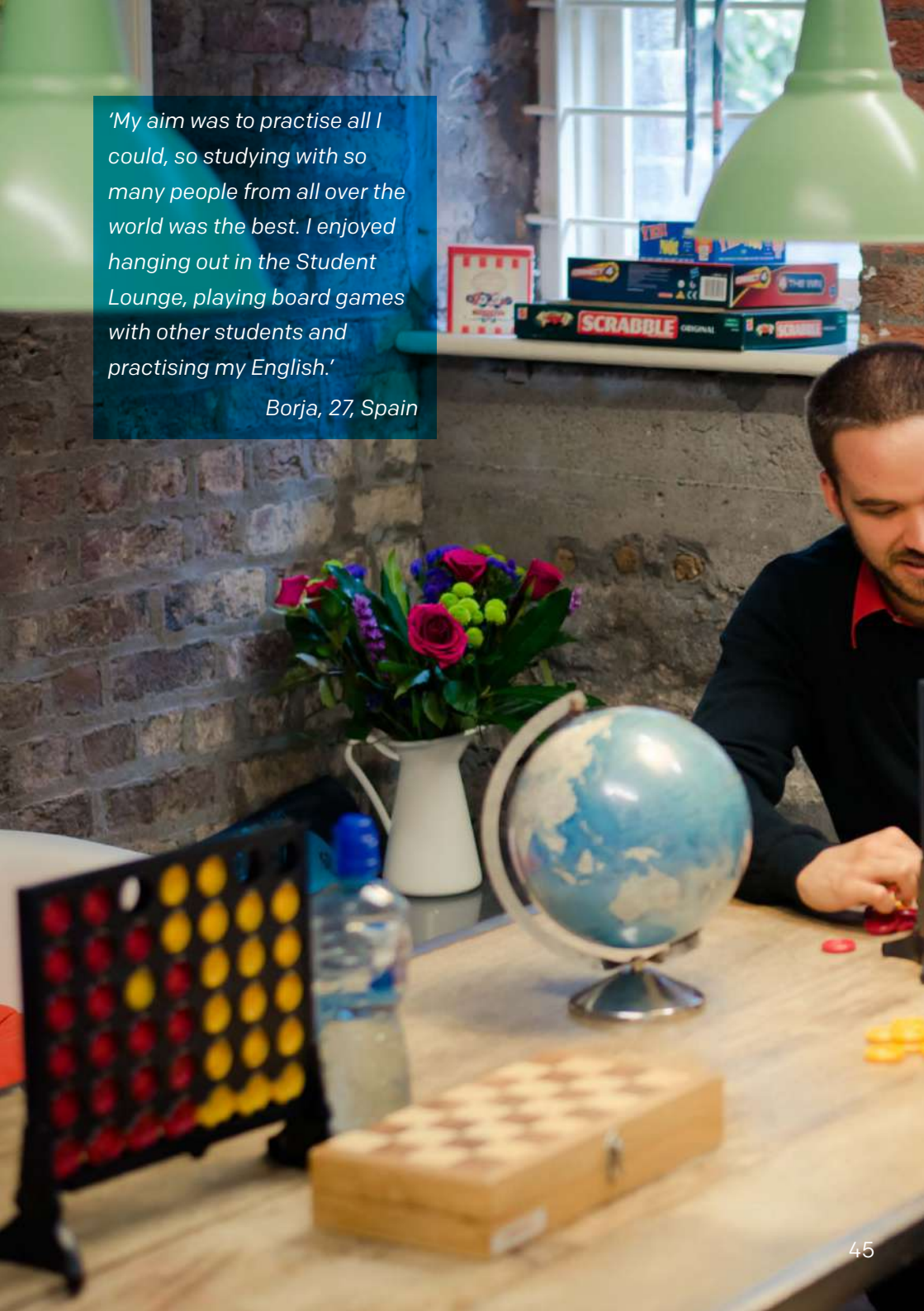
'ISI Dublin's cafe is a great place for students to meet and relax with their new friends. All prices are discounted so students can buy their lunch at much lower prices than outside the school.'





'My aim was to practise all I could, so studying with so many people from all over the world was the best. I enjoyed hanging out in the Student Lounge, playing board games with other students and practising my English.'

Borja, 27, Spain







HOST FAMILY

Host family accommodation allows the student to experience at first hand, family life and culture. The student will be placed in a home that suits their individual needs and requirements.



Love Learning

- Selected and inspected by ISI Dublin staff and Garda (Police) vetted.
- Around a 40-minute commute to the city centre & school by bus.
- Single or shared room.
- Half-board meals: breakfast and dinner each day, with lunch included at weekends.
- Accommodation staff at the school available to help students with any questions or concerns they may have.



STUDENT RESIDENCE

For students seeking a more independent life in Dublin, our self-catering residence, located close to the city and just 15 minutes' walk from our centres, is a great choice. Reserved for students aged 18+, the residence offers deluxe, high quality, single rooms with ensuite bathrooms and a shared kitchen and living space. This picture features our Broadstone Residence, but we also offer other residences of the same quality and standard, and this will be confirmed at the time of booking.



Love Learning



- Single bedroom
- Ensuite Bathroom
- Large Bed
- Bed Linen
- Desk & Chair
- Wardrobe
- Shelving
- Storage Space
- Fully equipped shared kitchen with all cooking utensils

- Living Area including a television.
- Cinema Room
- Games Room
- Study Area
- Gym
- Coin Washing Machine
- Coin Dryer
- Weekly clean of common area (kitchen/living room)

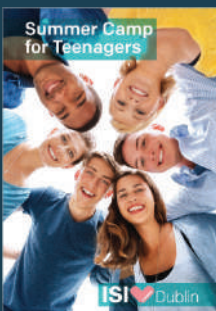


LOVE DUBLIN LOVE ISI



studyinireland.ie

Check out our other programme brochures!




<https://studyinireland.ie/get-our-brochures/>

At ISI Dublin we love what we do. We don't just teach courses, we offer you a complete experience, combining the best academic programmes with high-quality accommodation, an exciting social programme, great evening events and adventurous weekend excursions. Academic excellence is at the heart of what we do. ISI is recognised by ACELS, a service of Quality and Qualifications Ireland (QQI), for English language teaching. We are also a recognised examination centre for the Trinity College London ISE Examinations, Language Cert, Cambridge Examinations and IELTS. Using the most advanced teaching methods and the newest technology, our students enjoy a stimulating and interactive learning experience.

- › Adult English Language School
- › Summer Camp
- › School Groups
- › High School in Ireland
- › English and training courses for teachers and professionals

ISI  **Dublin**

 4 Meetinghouse Lane,
Mary's Abbey,
Dublin, Ireland
D07 V271

 +353 1 872 7888

 info@studyinireland.ie

 www.studyinireland.ie

Winner - Study Travel English Language School Europe 2014 - 2016 -2018 - 2020/21

